



PYTHEAS GROUP



Surface Management

ΒΙΠΕ Πατρών – 10 Ο.Τ. – Άγιος Στέφανος – Τ.Κ. 25200 – Τηλ. 26930 72102 – Fax: 211 800 1202 – www.pytheasgroup.com

Brief Photo Report of C5–Marine Coating Implementation

Stage One – Degreasing

Application of Alkaline Detergent followed by hot Pressure Washing at 200bars





PYTHEAS GROUP



Surface Management

ΒΙΠΕ Πιατρών – 10 Ο.Τ. – Άγιος Στέφανος – Τ.Κ. 25200 – Τηλ. 26930 72102 – Fax: 211 800 1202 – www.pytheasgroup.com

Stage Two – Sandblasting

- *Brand New Compressors Equipped with On-board Aftercoolers Guarantee that Blasting Air is Free of Oil and Humidity*
- *Certified Sibelco Blasting Media – Aluminum Silicate 0,2 – 0,6mm producing a Uniform Surface Roughness of 60μM – Metal Cleanliness SA 3.0*





PYTHEAS GROUP



Surface Management

ΒΙΠΕ Ποτρών – 10 Ο.Τ. – Άγιος Στέφανος – Τ.Κ. 25200 – Τηλ. 26930 72102 – Fax: 211 800 1202 – www.pytheasgroup.com

Stage Three – Bottom Coat

- *Environmental and Metal Surface Conditions are monitored and logged during all Stages along with Paint Data*
- *Bottom Coat starts with Stripe Coating of all Edges, Corners and Openings*



- *Followed by Spray Paint*
- *Wet Paint Thickness is monitored via certified Gauges*





PYTHEAS GROUP



Surface Management

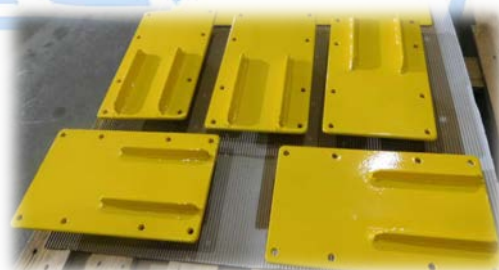
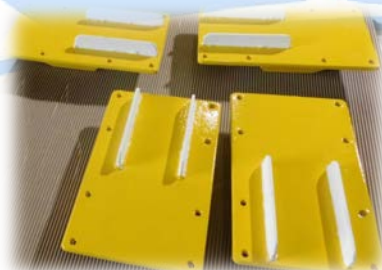
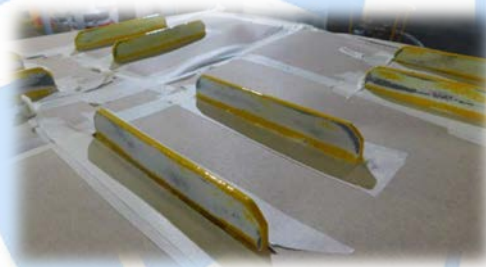
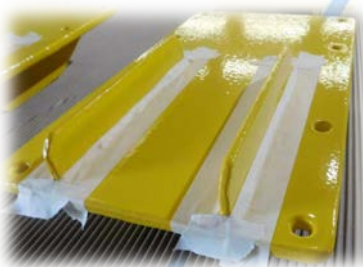
ΒΙΠΕ Ποτρών – 10 Ο.Τ. – Άγιος Στέφανος – Τ.Κ. 25200 – Τηλ. 26930 72102 – Fax: 211 800 1202 – www.pytheasgroup.com

Stage Four – Consecutive Layers

- *Following the Completion of each Layer, the Dry Film Thickness is checked with a Digital DFT Gauge*



- *If the Readings are within Specs we move on to the next Layer*
- *If Thickness is lacking extra Paint is applied*
- *If Thickness is over the Limit, the overpainted Areas are marked and trimmed down*





PYTHEAS GROUP



Surface Management

ΒΙΠΕ Πλατάνων – 10 Ο.Τ. – Άγιος Στέφανος – Τ.Κ. 25200 – Τηλ. 26930 72102 – Fax: 211 800 1202 – www.pytheasgroup.com

Stage Five – Packaging

- *Experience has shown that Coating Schemes are often damaged during Shipping thus greatly undermining the Longevity of the Protection System*
- *In order to minimize such occurrences and the Necessity of on the Spot Repairs we provide thorough Packaging*



- *All Projects carried out by Pytheas Group are Monitored and Data, Photos, and Forms are Archived*
- *Reports and Photos are available if requested*